

Info village

Fall 2023



3125, Capelton Road
www.northhatley.org
Telephone: 819 842-2754



*The Municipality of the Village of North Hatley
wishes you all a wonderful fall season.*

The Municipality at your service

Mayor

Marcella Davis-Gerrish

Councillor, seat #1

Michel Desrosiers

Councillor, seat #2

Carroll Haller

Councillor, seat #3

Danielle Dupré

Councillor, seat #4

Elizabeth Fee

Councillor, seat #5

David Wilson

Councillor, seat #6

Andrew Pelletier

**Director General and Clerk,
Emergency Measures**

**Coordinator, Access to
records, Manager of the dam**

Benoit Tremblay

Assistant Director General

Bruno Bélisle

Accounting Assistant

Marie-Pier Roy

**Inspector – Building and
Environment**

Mathieu Abran

Secretary/Receptionist

Julie Weldon

Director of Public Works

Wade Morse

Employees – Public Works

Scot Fergusson

Michael Deblois

Jonathan Paré

Business hours

Monday, Tuesday and Thursday

8 a. m. to 12 p.m. and

1 p.m. to 4 p.m.

Wednesday

8 a.m. to 12 p.m.

Friday

8 a.m. to 12:30 p.m.

Contact us

3125 Capelton Road

North Hatley (Québec) J0B 2C0

Email: info@northhatley.org

Phone: 819 842-2754

Fax: 819 842-4501

Website: www.northhatley.org

Important numbers

Emergency 911

SQ 310-4141 or *4141 (cell)

Road conditions: 511

Urgences-santé: 811

The municipal office will be closed
on Monday October 9, 2023
for Thanksgiving Holiday.



The municipal office will be closed
Monday, November 13, 2023 for
Remembrance Day.

Municipal Council Meetings

Upcoming regular council meetings will be held on:

October 2

November 6

December 4

December 13 (Extraordinary)

Starting at 7 p.m. at the North Hatley St. Elisabeth
Church at 3115 Capelton Road.

Tax payments 2023

Asa reminder, here are the next municipal
tax payment date:

October 2nd

Paynebt by cheque, cash, debit card or
through your financial institution



- ❖ Meals on Wheels (Monday and Wednesday)
- ❖ Blood Pressure Clinic
- ❖ Foot Care Clinic
- ❖ Friendly Visits
- ❖ Community meals
- ❖ Social events
- ❖ Shopping
- ❖ Caregiver support

For more information,
contact Community Care at 819 821-4779

The North Hatley Farmer's Market continues!

The season isn't over yet!

The Farmer's Market is open every Saturday from 10 a.m. to noon until October 14.

Join the many visitors & citizens who have enjoyed the products offered by our merchants since the beginning of the season.

A great opportunity to share North Hatley with friends or simply to treat yourself!

A reminder that recycling, garbage and compost bins will not be emptied if the lids are attached during collection.

Overnight Parking

We wish to remind you that according to By-law # 2018-611, that it is strictly forbidden to park your vehicle on public roads as well as in the municipal parking lot during the winter period from November 1 to April 1, between 11:00 p.m. and 8:00 a.m.

Vehicles parked in violation of this rule will be towed immediately at the owner's expense and are subject to a fine.

We thank you for your cooperation in enforcing this by-law.



Leaf collection

Leaf collection will take place between **October 15 and November 18, 2023.**

Steps to follow:

- The leaves **must be placed in compostable paper bags**;
- No plastic bags will be picked up;
- The bags must be free of pine or fir needles or other types of waste;
- The bags must be placed at the side of the road and not on public roads.

In addition to leaf collection, there are alternatives available for recycling dead leaves:

1. Shred small amounts of leaves with your lawn mower; they make an ideal fertilizer.
2. Dispose of leaves in your brown bin (compostable matter).
3. Spread shredded leaves on your flowerbeds. They provide winter cover and food for your plants. Shredded leaves should be spread late in the fall when plants are dormant.
4. Cover your vegetable garden with leaves. Soil doesn't do well when exposed to the elements and can become packed down from the effects of snow and rain. Leaves can be kept covered with netting or a screen or watertight membrane. In the spring, leaves can be left in place, they will decompose progressively.



Reminder!

Time change will take place through the night of November 4th to 5th of 2023.

Don't forget to turn back all regular and electronic devices by 1 hour.

One village, one speed - We're almost there ...!

September council resolution 2023-9-11.12 standardizes the speed limit in the village at 30km/h. This speed allows everyone to improve the safety of pedestrians and cyclists.

There are 2 exceptions to this resolution: Capelton Road and Magog Road (Route 108, a provincial government responsibility), where the speed limit is 30 km/h from the Town Hall to the crosswalk on Magog Road from May to October, and Sherbrooke Road, where the speed limit is 40 km/h from Merrill Street to the village limits in both directions.

Major measures are planned for 2024 on Capelton Road and Magog Road to reduce speeds during specific periods of the year.

Speed signs are gradually being replaced, and police will be on hand to enforce the new measures.





CONCERT

CHANTS du MONDE

Songs of the World

avec *with* **LES
SANGS MÊLÉS**

6 voix fascinantes et un musicien
6 stunning voices and a musician

Exceptionnellement : un chant en français et en anglais
Exceptionally : songs in French and English

PARTICIPEZ AU CONCERT et CHANTEZ grâce à l'ATELIER VIP à 11h00
TAKE PART IN THE CONCERT and SING thanks to the VIP WORKSHOP at 11:00 AM

PLACES LIMITÉES LIMITED SEATING

DIMANCHE SUNDAY 15 OCTOBRE 15h30 3:30 PM

Rencontre avec les artistes et café après *Encounter with the artists and coffee after the show*
Église *Church* St. Barnabas, 640 ch. Sherbrooke, NORTH HATLEY

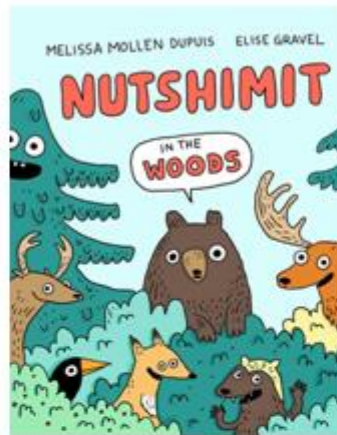


artsculturesmassawippi.org





Stories and Activities



Book clubs
Knitting circle
Book launches
Art by local artists
Parent-child meetings and more

Saturdays at 11am

September 9 and 23

October 14 and 28

November 18

Please, register at the counter or by email

biblio@nhlibrary.org

Limited spots!

Activity offers in **English** and in **French**

Voluntary contribution about 3\$ to cover the art material

Your library
Open to all
Annual subscription
30 family/\$25 individual

Bibliothèque de North Hatley Library
165 rue Main, North Hatley, QC, J0B 2C0
819-842-2110
biblio@nhlibrary.org
nhlibrary.org

Heures d'ouverture Opening hours

| | |
|---------------------------|---|
| Monday/Lundi | CLOSED/FERMÉ |
| Tuesday/Mardi | 10am-12:30pm/10h-12h30 |
| Wednesday/Mercredi | 10am-12:30pm/10h-12h30 5:30-7:30pm/17h30-19h30 |
| Thursday/Jeudi | 10am-12:30pm/10h-12h30 |
| Friday/Vendredi | 10am-12:30pm/10h-12h30 |
| Saturday/Samedi | 10am-3pm/10h-15h00 |
| Sunday/Dimanche | CLOSED/FERMÉ |

North Hatley, the Eastern Townships' most American village (and a Clinton favorite)



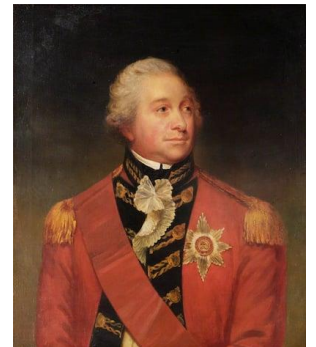
JAMES JACKSON, author

Every year, former U.S. President Bill Clinton and his wife Hillary spend part of their summer vacation in North Hatley. While the Clintons chose this picturesque village through their friendship with best-selling novelist Louise Penny, they are following an American tradition that goes back over 150 years.

North Hatley's origins can be traced back to the American Revolutionary War in the 18th century. Some 40,000 Americans loyal to the British Crown decided to leave their homeland and seek refuge in British North America. By the end of hostilities in 1783, almost 2,000 American loyalists had already settled in the vast territory known as the Province of Quebec.

THE CHALLENGE OF IMMIGRATION

This wave of immigration represented a major challenge for the British authorities. How could the King's loyal American subjects be rewarded with land without upsetting the French-speaking population? In 1791, Great Britain finally found a solution. It divided the province in two: Upper Canada and Lower Canada.



The new Lieutenant-Governor of Lower Canada, Alured Clarke, was given the task of opening the new province to colonization. In February 1792, he announced that the area south of the St. Lawrence River near the border would be granted to anyone wishing to settle on Crown land. But the process was complex and slow to get off the ground.

FAMILIAR NAMES FOR TOURISTS

Two men, one British and one American, waited more than 11 years before being granted almost 24,000 acres in the new Hatley Township.

Henry Cull, originally from Dorset, England, was a businessman who settled in Quebec City around 1784. Unable to make a fortune in commerce, he turned to land speculation. In 1803, he joined forces with Ebenezer Hovey, an early Connecticut Loyalist, to form a 33-member association to exploit the concession.

Cull eventually acquired the land bordering the Massawippi River and the northern end of the lake. With his American partner, he paved the way for other Americans from Massachusetts and New Hampshire. They were called the LeBarons, the Wadleighs or the Hoveys, names that will be familiar to tourists visiting the village today.

THE ARRIVAL OF THE RAILROAD

Americans were also responsible for transforming North Hatley into a popular resort in the late 19th century. Two factors were decisive.

Firstly, the village was finally connected to the rail networks providing access to the Eastern Townships from the United States.

In 1871, the Massawippi Valley Railroad (MVR) built a new line between Newport, Vermont, and Lennoxville, passing through North Hatley. The Connecticut & Passumpsic Railway, which had been connecting Boston and Newport since 1864, leased the new line. Suddenly, North Hatley was accessible to summer visitors from New England and beyond.

The other factor that played a decisive role in the transformation of the peaceful little village was the very particular economic climate of the time. The period from 1865 to 1877 was the era of post-Civil War restructuring in the United States.

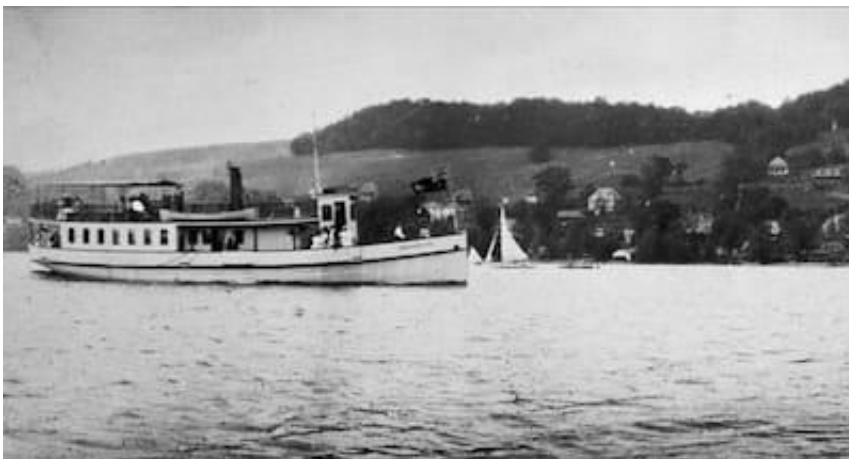
NORTH HATLEY MORE POPULAR THAN THEIR COUNTRY

But restructuring didn't mean reconciliation. The large Southern families who, before the war, had been accustomed to spending their summers in New England decided to shun Yankee country in favor of North Hatley.

In 1886, a new trend began when Dr. Powhatan Clark, a Baltimore resident and friend of the LeBaron family, built a second home in North Hatley. Other Americans followed his example.

The most famous was Henry Atkinson, owner of Atlanta's Georgia Power, who in 1900 built a grand summer home inspired by George Washington's Mount Vernon residence.

Renamed the Hovey Manor in the 1950s, the hotel perpetuates the name of the man who deserves to be considered North Hatley's first American pioneer.





**AVEZ-VOUS VOTRE PERMIS?
DO YOU HAVE YOUR PERMIT?**



Les permis sont disponibles du lundi au jeudi de 8h à 16h et le vendredi de 8h à 12h.

Permits are available from Mondays to Thursdays from 8 a.m. to 4 p.m. and Fridays from 8 a.m. to 12 p.m.

819-838-5877, # 209

Vous pouvez aussi faire votre demande de permis via notre site internet :

You can also request your permit via our website:

www.regieincendieest.ca

**INSTALLATION CONFORME
COMPLIANT INSTALLATION**

**AUCUN PERMIS NÉCESSAIRE
NO PERMIT REQUIRED**



**FEUX À CIEL OUVERT
OPEN BURNING**

**PERMIS NÉCESSAIRE
PERMIT REQUIRED**



Un permis est obligatoire pour les feux à ciel ouvert



Il est permis de brûler :

- Branches
- Bois (bûches, billots)



Il est interdit de brûler :

- Feuilles
- Herbes
- Bois de construction
- Déchets
- Etc.

A permit is required for open burning



It is allowed to burn:

- Branches
- Wood (logs, bolts)



It is forbidden to burn:

- Leaves
- Grass
- Construction wood
- Waste
- Etc.



**RÉGIE INCENDIE
MEMPHRÉMAGOG EST**

819-838-5877, # 209

prevention@regieincendieest.com

www.regieincendieest.com

Reference in case of power failure

To find out the details of a power outage, such as the duration or the reason, contact Hydro-Québec's outage and emergency service at 1-800 790-2424 and follow the instructions on the menu. You can also consult the "Outages in progress" map on Hydro-Québec's website, Info-Pannes, or download the Hydro-Québec application from the App Store and Google Play.

Before contacting them, make sure that the outage is also affecting your neighbours and that it is not a fault that originates solely in your home.



Chimney Cleaning

With the approaching cooler weather, many among us will warm up by the stove or fireplace. With good chimney maintenance, you can enjoy the warmth of your stove or fireplace safely and worry free.

Why chimney sweep?

In addition to fire prevention, chimney cleaning also helps:

- Prevent carbon monoxide poisoning with better release of smoke and toxic gases;
- Eliminate soot and flammable deposits (creosote) that have built up in the chimney;
- Maintain the efficiency of the heating system and save on heating supplies;
- Locate the source of a breakage or system defect and its components by a professional chimney cleaner.

It is recommended to have a chimney cleaned at least once a year either in the spring or fall. Chimney cleaning on a regular basis is also recommended according to the quality and quantity of the wood burned.

You can clean your chimney yourself or have the work done by a professional chimney cleaner.

For your own safety, hire a qualified professional to do the work. It is recommended to go to the Association des professionnels en chauffage (APC) and consult the list of qualified members.

If the chimney cleaner has to repair either the chimney or fireplace, it is also recommended to make sure that the professional has a permit from the Régie du bâtiment du Québec.

Request a receipt that confirms that the chimney cleaning took place.

The Municipality of the Village of North Hatley neither recommends nor endorses any particular chimney cleaning firm.



Closing up cottages and secondary residences

Fall is right around the corner, the time of year when cottages and secondary residences are set to be closed up for another season and until the following spring.

The decision to leave water dripping to avoid pipes freezing may seem ideal, but the practice is prohibited by the Municipality (By-law 2016-589 on drinking water usage).



Shutting off the outside water valve on a property can be done by contacting the Municipality at 819 842-2754. A fee of \$50 per valve is applicable and a 24-hour advance notice is required.

The work must be done by municipal public works employees only. Owners/Residents who carry out the work themselves or have a third party do it for them will be held responsible for any and all damages incurred.

Employees specifically designated by the Municipality may enter into a private or public place at any reasonable time, within or outside the limits of the Municipality to ensure that the provisions of the current By-law have been adhered to (*Article 7.2, By-law 2016-589*).

Hedges

A seasonal reminder about hedge planting, height and maintenance



- a hedge cannot exceed 1.0 m (3.2 ft.) in the front yard. In the remainder of the lot, the maximum height for a hedge is 3.0 m (10 ft.). Where a mound is placed under the hedge, the height of the mound is included in the height of the hedge;
- a hedge shall be located at least 60 cm (2 ft.) from the street right-of-way and 1.5 m from a fire hydrant.

Right-of-ways

- Every property owner is to maintain and cut vegetation on the portion of the right-of-way in front of or adjacent to their building or land. No owner shall allow grass to grow to a height greater than 20 cm.
- No person shall encroach into the right-of-way of a street or install anything in the right-of-way of a street without the permission of the municipality.
- No person shall leave a tree or other object located on a property adjacent to the right-of-way, interfere with traffic by impairing visibility or threatening the safety of visibility or threaten the safety of users of the street.
- The municipality may proceed with the cutting or pruning of trees and shrubs encroaching upon or located within the right-of-way without having to request permission from the owner of the property.